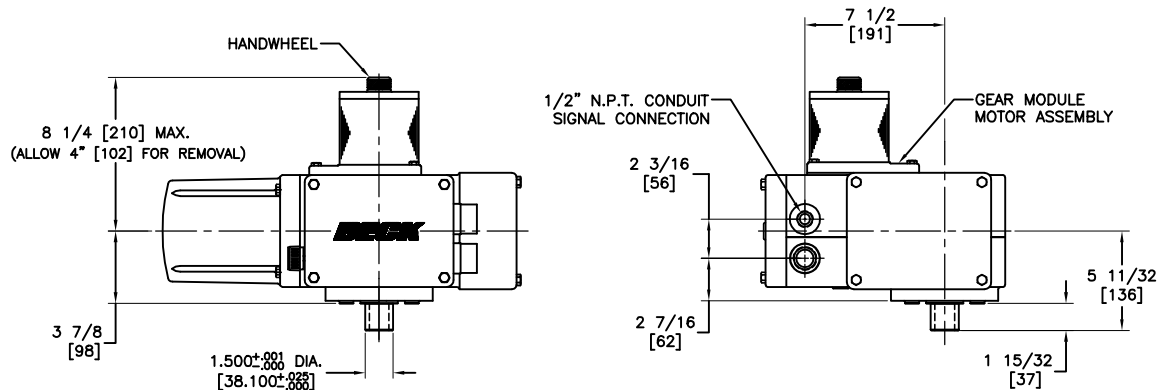
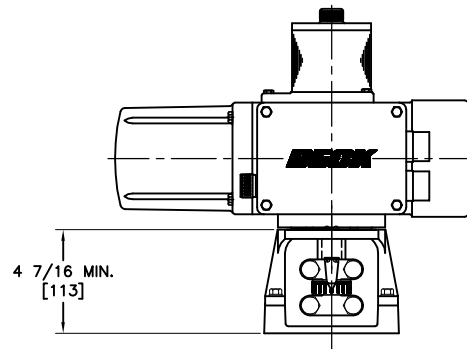
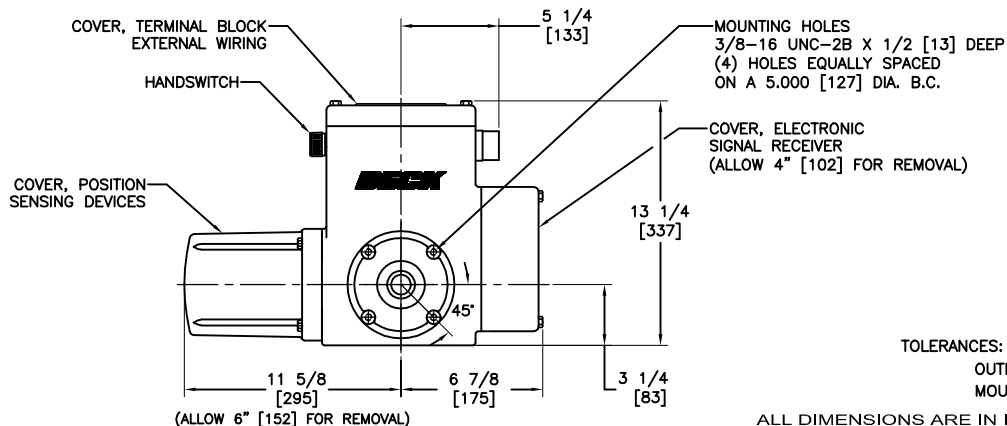


THIS DOCUMENT IS A COPY AND IS NOT THE SOURCE DOCUMENT. INFORMATION IS SUBJECT TO CHANGE WITHOUT NOTICE. THE INFORMATION CONTAINED HEREIN IS COPYRIGHTED BY HAROLD BECK AND SONS, INC. CHANGES TO THE DOCUMENT ARE PROHIBITED. CONTACT A BECK SALES ENGINEER IF A CERTIFIED DRAWING IS REQUIRED.



BASIC CONTROL DRIVE

BASIC CONTROL DRIVE WITH MOUNTING HARDWARE



TOLERANCES:  
 OUTLINE DIMENSIONS ±1/4 [±6]  
 MOUNTING DIMENSIONS ±1/16 [±2]

ALL DIMENSIONS ARE IN INCHES AND [MM] UNLESS OTHERWISE SPECIFIED. THREADS AND TAPPED HOLES ARE SPECIFIED AS UNIFIED THREAD SIZES ONLY. CONDUIT PIPE THREADS PER AMERICAN NATIONAL STANDARD TAPER PIPE THREADS (N.P.T.)

RECOMMENDED SCREW TORQUES

	SIZE (IN.)	TORQUE (LB.-FT)	TORQUE (Nm)
COVER SCREWS	5/16-18	10	14
MOTOR/GEAR MODULE SCREWS	1/4-20	6	8
BODY SCREWS	5/16-18	10	14
BODY SCREWS	3/8-16	20	27
CONTROL END COVER SCREWS	5/16-18	10	14
COUPLING SCREWS	5/8-18	170*	230*
MOUNTING BRACKET SCREWS (FLAT HEAD)	3/8-16	25	34

\*MAY VARY PER APPLICATION. REFER TO VALVE MOUNTING SPECIFICATION SHEET SHIPPED WITH YOUR DRIVE.

BECK DRIVE MODEL NO.	TORQUE RANGE	APPROX. WEIGHT
11-160	15 TO 80 LB.-FT. 20 TO 108 Nm	56 LBS. 25 KGS.

18-2160-010



HAROLD BECK & SONS INC			
MOTOR DIVISION, CHICAGO, ILLINOIS, HONOLULU, HAWAII, USA			
TITLE			
BECK 11-160 HOLLOW SHAFT DRIVE			
DRAWN: DMSD 12-20-10	SCALE: NONE	DRAWING NO. 18-2160-010	REV. B
CHECKED: GMSD 12-20-10			
APPROVED: HMSD 12-22-10		SHEET NO. 1	OF 1

SIZE:  
D