

MODEL GROUP 22
BECK ELECTRONIC
CONTROL DRIVES
HANDSWITCH KIT
(P/N 12-8061-12)

REPLACEMENT INSTRUCTIONS

For the Group 22 Handswitch

PURPOSE

The purpose of these instructions is to provide a step-by-step method for replacing the Beck Group 22 Handswitch. The Handswitch is a non-wear item that only requires replacement if physically damaged. Hardware supplied with this kit is listed in Table 1.

WARNING

Electrical shock hazard—disconnect power before proceeding. Remove the drive from line voltage and shut off any external power sources feeding the auxiliary switches.

REQUIRED TOOLS

The following tools are needed to replace the Handswitch:

- 1/2" socket wrench
- Scotch 847™ gasket adhesive or equivalent
- Torque wrench (appropriate for 10 lb-ft)

PROCEDURE

Refer to Figure 1 for component identification.

1. Remove power from the drive.
2. Remove the hex mounting screws (5/16-18 x 1/2") to pull the Handswitch assembly away from the drive body. Pull the Handswitch assembly from its opening until the entire assembly is exposed.
3. **Disconnect one wire at a time** from the Handswitch and reconnect it to the corresponding terminal on the new Handswitch (see Figure 2 for Handswitch wiring diagram, if needed).
4. Discard the old Handswitch once all the wires have been removed.
5. Inspect the Handswitch gasket; replace as necessary. If the gasket's condition is good, skip Steps 6–8.
6. Clean the mating face of the drive body to remove any remaining gasket material and adhesive. Ensure that the mating surface is free of defects such as dents or gouges.
7. Apply a thin film of gasket adhesive to the body's mating face to adhere the gasket.
8. Press the new gasket into place.
9. Slide the new Handswitch assembly into the body opening while avoiding pinching, crimping, or scraping any of the wires. Ensure that the Handswitch assembly is oriented as depicted in Figure 1 (CCW label at the top). Fasten the assembly into place with the 5/16-18 bolts, tightening them to 10 lb-ft.
10. Connect power to the drive.
11. Operate the Handswitch at each of the five positions. Observe the drive to verify that it responds correctly.
12. Return the drive to service.

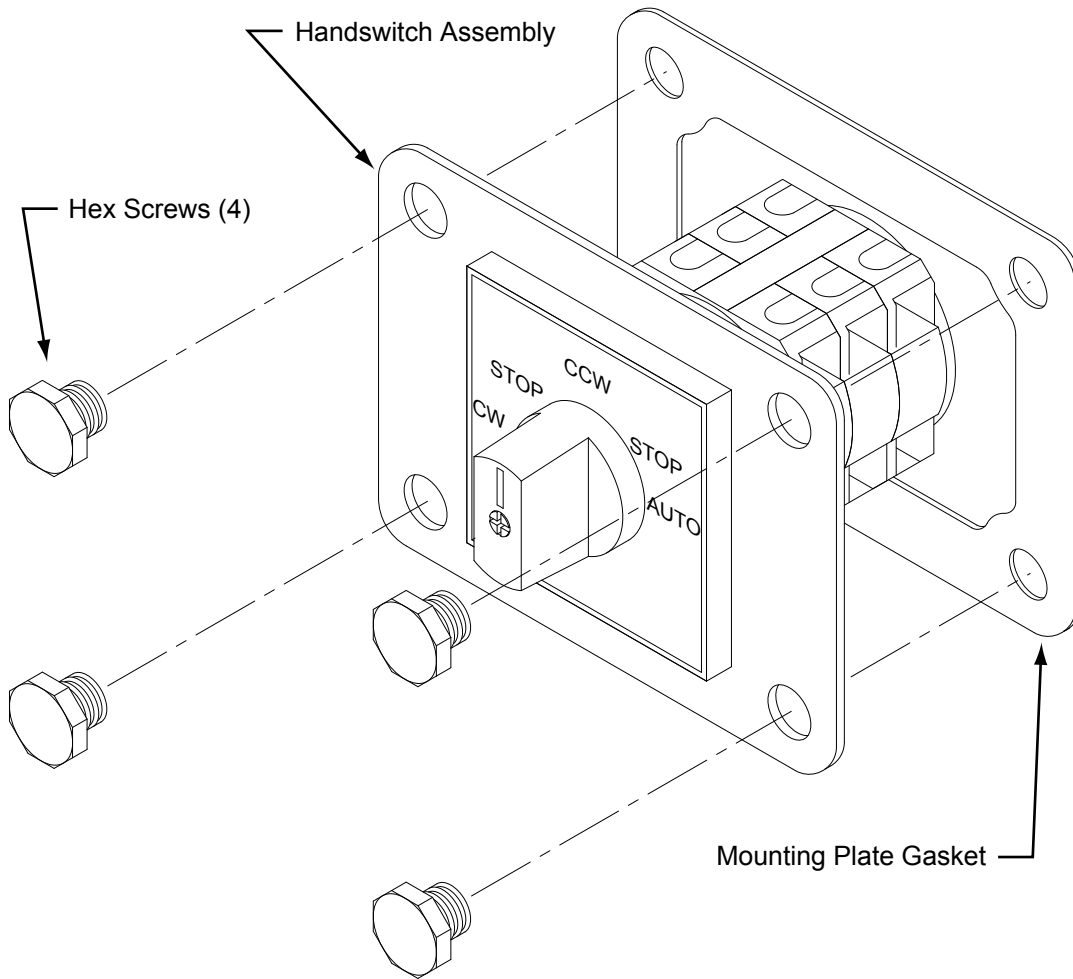


Figure 1

Handswitch Wiring

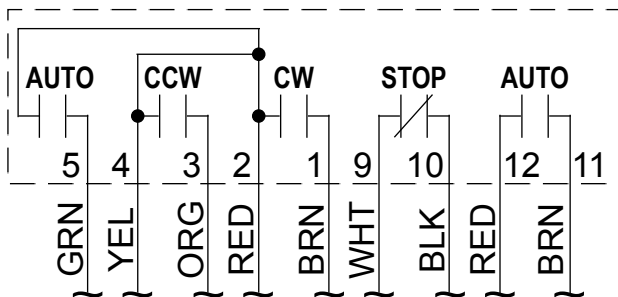


Figure 2

Table 1: Handswitch Kit

Part Description	Part Number
Handswitch Assembly	20-3310-12
Hex screw 5/16-18 x 1/2" (4)	30-0307-43
Handswitch Mounting Plate Gasket	20-0660-65