



REPLACEMENT INSTRUCTIONS

DIGITAL CONTROL MODULE FUSE REPLACEMENT KIT P/N 12-8064-16

PURPOSE

The purpose of these instructions is to provide a step-by-step method for replacing the fuse on the Digital Control Module (DCM).

REQUIRED TOOLS

- 1/2" socket or wrench
- Small needle nose pliers
- Scotch™ 847 gasket adhesive or equivalent
- Torque wrench appropriate for 10 lb-ft

WARNING

Electrical shock hazard—disconnect power before proceeding. Remove the drive from line voltage and shut off any external power sources feeding the auxiliary switches.

PROCEDURE

Refer to Figure 1 for component identification.

1. Remove power from the drive.
2. Remove the terminal enclosure cover by loosening the (6) 5/16-18 hex head captive screws.
3. Locate the DCM board within the terminal enclosure.

CAUTION

Observe precautions for handling electrostatic sensitive devices.

4. The fuse is located on the DCM board to the right of the transformer, next to the wire connector plug.
5. Using the small needle nose pliers, carefully remove the fuse from its holder on the DCM.
6. Install the new fuse in the holder with the text facing out. Ensure that the fuse is fully installed in the holder.
7. Inspect the terminal cover gasket on the drive body and replace, if necessary. If the gasket is in good condition, skip to step 11.

8. Clean the mating face on the drive body to remove all gasket material and adhesive. Ensure that the mating surface is free of defects such as dents or gouges.
9. Apply a thin film of gasket adhesive (Scotch™ 847 or equivalent) to the mating face of the drive body.
10. Firmly press the new gasket into place and allow time for the adhesive to set before continuing.
11. Connect power to the drive.
12. Modulate the demand signal to run the drive through its full range of motion. Verify the correct drive response.
13. Modulate the signal to several intermediate levels and note if the drive attains the proper position.
14. If the drive responds correctly, reinstall the terminal cover, tighten the (6) 5/16-18 hex head captive screws to 10 lb-ft torque, and return the drive to service.
15. If the drive does not respond correctly, refer to the troubleshooting and calibration sections of Beck Instruction Manual 80-0042-01.

Table 1: DCM Fuse Replacement Kit

Part Number	Description
11-1373-01	Fuse, 7A, 125V
20-0660-76	Gasket, Terminal Cover

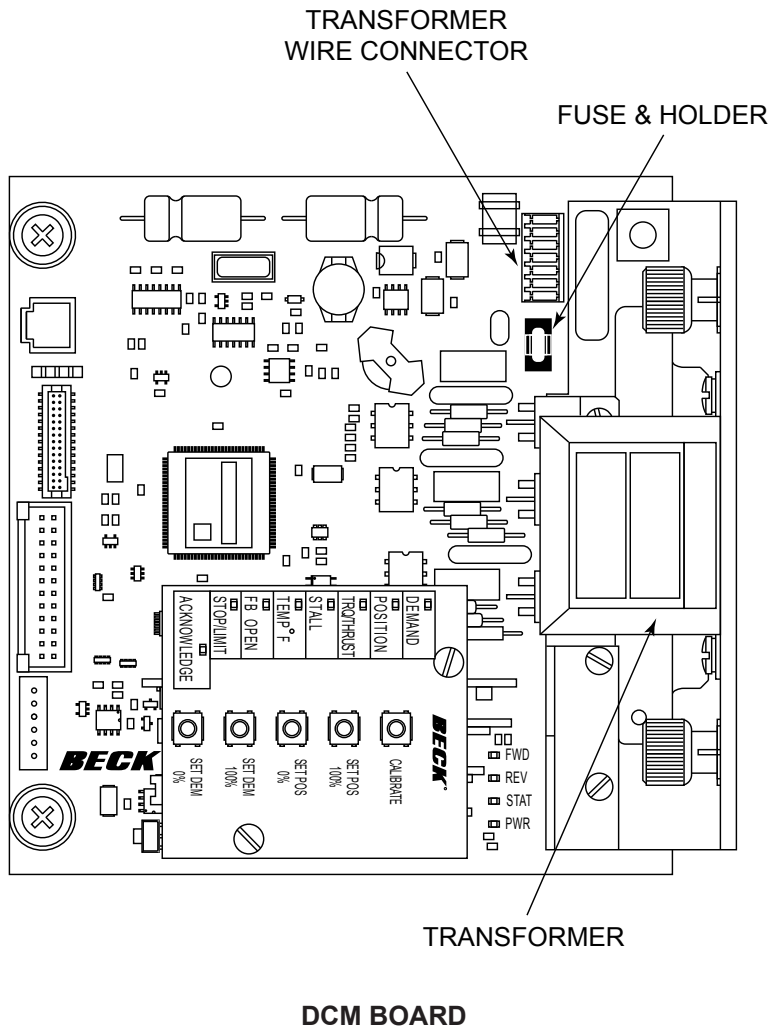


Figure 1