

## Control Options

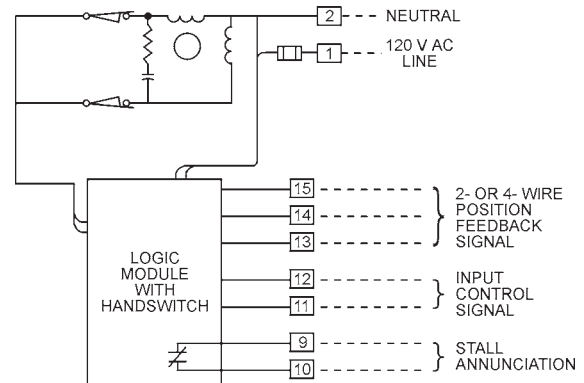
### Modulating Options 31-M30 and 31-M50 Analog Position Control with Loop Powered or Drive Powered Position Feedback Signal

Provides automatic modulation in systems using standard 4–20 mA input signal and feedback. The local electric Handswitch is standard. The LOS feature is also included along with contacts for stall sensing and annunciation.

Two auxiliary switches are provided as standard.

Terminals are provided for a field connection choice of 2-wire or 4-wire position feedback (see page 68).

Note: Dashed lines indicate customer wiring. Circuit diagrams are functional; request certified wiring diagrams for the drive you select.

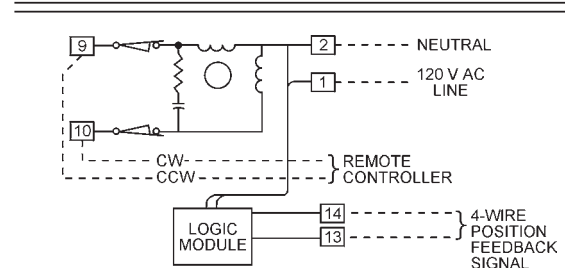
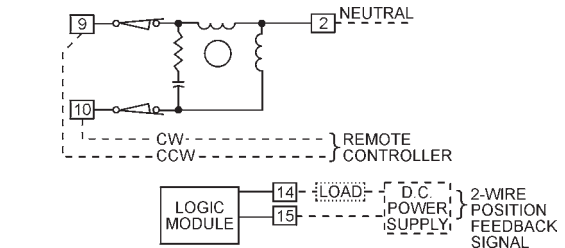


### Modulating Options 31-330 and 31-350 Direct AC Control with Loop Powered or Drive Powered Position Feedback Signal

Energized from a remote controller or manual switches, this option includes integral 4–20 mA signal output for position indication.

The top wiring diagram indicates configuration for 2-wire feedback systems. The bottom wiring diagram indicates configuration for 4-wire feedback systems (see page 68).

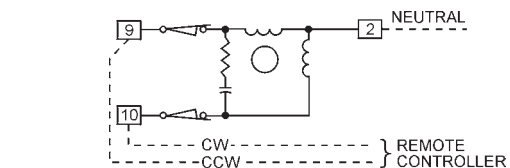
Two auxiliary switches are provided as standard.



### Open/Close Options 31-230 and 31-250 Direct AC Control

For simple open/close operation, two end-of-travel switches and two auxiliary switches for remote indication are included.

Two auxiliary switches are provided as standard.



### Auxiliary Switch Terminals

Two auxiliary switches are included in every control option in addition to the end-of-travel switches. All switches are form C, and are rated 1 A at 120 V ac.

The wiring diagram at right shows the typical configuration for auxiliary switch connections.

